

# OME-RESA INSIGHT

Issue 8

Spring 2011

Ohio Mid-Eastern Regional Education Service Agency

An Information Technology Center (ITC) of the Ohio Education Computer Network (OECN)

Serving an 11 county area and 45 school districts in Mid-Eastern Ohio

## CONGRATULATIONS, BRENDA HARTLEY!



The OAEP EMIS Professional of the Year Award is a way to recognize an individual who has provided outstanding leadership, motivation and organizational skills to his or her district and community, while inspiring co-workers to use their fullest potential for the betterment of themselves and their district.

**Brenda Hartley** was awarded the OAEP EMIS Professional of the Year Award on May 2, 2011. Brenda has worked at OME-RESA for ten years and is a valued member of the OME-RESA team.

OME-RESA wants to recognize and thank her for the dedication and support for EMIS and other Student Information Services that she has provided to districts.



### Inside this issue:

Administrative Update	2
Student Services Update	3 - 4
EMIS Update	5
Fiscal Update	6
INFOhio Update	7 - 13
Network/System Update	14- 16

### OME-RESA PHONE EXTENSIONS

ANGIE UNDERWOOD	116
ADAM TRUEX	120
BERNIE GRABITS	106
BRENDA HARTLEY	103
CINDY ALBAN	150
CINDY BONI	115
DAVE SAVASTONE	102
DAVID ROE	125
JEFF KRZYS	128
KATHY DUNLEVY	122
MIKE FALLS	108
MISSY SUTHERLAND	104
SAM FLEDER	110
SANDY PETROZZI	109
VALERIE KEOUGH	105



## ADMINISTRATIVE UPDATE



### Broadband Options for Schools!

In 2005 OME-RESA stated that it was the goal of the ITC to provide broadband connectivity options to all buildings in the 11 county Appalachian service area within five years. Even though it took six years, OME-RESA is pleased to announce that goal has been met. Broadband options were provided to all buildings that OME-RESA serves for the 2011-2012 school year. OME-RESA currently utilizes four different vendors to provide broadband options, and it is our continued goal to drive down these costs.



### IT'S ELECTRIC!



Costs are rising everywhere we turn and it's the mission of the OME-RESA Cooperative Purchasing Department to research and develop programs to save members money using the buying power of all the members combined.

For several years we investigated the opportunity to save money on electric utility bills, but the margin of savings was minimal since most of the OME-RESA schools are AEP Ohio Power, the cheapest electric rates in Ohio. Recently, however, the PUCO allowed AEP to raise rates, making it feasible to put together an Electrical Purchasing Consortium. An RFP went out in February and in one quick week in March the paperwork was completed for participating districts to lock in a rate of \$55.82 per MWh with AEP Retail, a division of AEP. AEP Retail has indicated, based on historical usage, the 27 participating districts will save \$1.5 million over the 33 month contract term.

During the month of May, Michelle Milliken will be working with AEP Retail to assist any of the remaining districts who may have an interest in participating. AEP Ohio, First Energy and Ohio Edison customers can participate. Local electric co-ops are not eligible at this time. For more information on the electric program contact Michelle at [michelle.milliken@omeresanet.net](mailto:michelle.milliken@omeresanet.net).

### CO-OP CATALOGS 2011

Recently the 2011 Co-op catalogs were put up on the OME-RESA Website for district access. In an effort to further reduce costs to districts, OME-RESA and three other Ohio Co-ops joined forces to drive pricing with numbers. Some high points of the new Classroom and Office Supplies Catalog are:

- Product pictures
- Reduced number of vendors which equals reduced number of purchase orders
- Calculators to track purchasing by building, by teacher, by department, etc.
- Capability to sort by various categories (i.e. vendor or product type) right down to a specific color of paper

We welcome any suggestions for improvement, suggestions for new items or items that you don't see this year that you have bought in the past. In May we will be going out to bid for ink and toner cartridges for printers. More information will be forthcoming.

In addition, copier paper has been broken out of the Classroom and Office Supply catalog so that we can bid copy paper twice a year. We have heard from districts saying they often need additional paper later in the year. The second bid will allow us to obtain competitive pricing for those who have to purchase after December.



## STUDENT SERVICES UPDATE

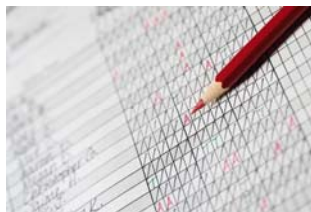
Just a Reminder to visit the Knowledge Books often as we are continually updating information there. This is where we break information out into individual docs for you to use as a quick reference.



- DASL
- DASL SECURITY
- DASLr
- EMIS
- Cornucopia
- Progress Book
- Special Services
- SISENews Archive
- OME-RESA Conference Docs

### ProgressBook

Something to remember in ProgressBook at end of year time is the entry dates. If you have marks that are not saving for reporting periods exam, average, or final, check the dates. Entry window dates need to be open for all of these reporting periods individually, as well as the last regular reporting period of the year.



### PB to DASL Period Attendance

Period attendance has always been possible in ProgressBook. Teachers could take period attendance and use it for their own purposes if they wanted. There is a Period Attendance Report that can be used for documentation purposes if needed. This will not be changing.

What will be changing is the ability for ProgressBook to load the period attendance data over to DASL. In school year 2011-2012 you will be able to choose what type of attendance PB will send to DASL. **This can be daily or period, but not both.** DASL can only use one type of attendance. The choice is yours! This works by building so the HS could use the period attendance and the ES could continue to use daily.

For EMIS reporting purposes, absences must be accumulated into a total for full days absent with the smallest increment being half a day, regardless of how it is collected. Schools configured to collect period attendance must also set configuration options to indicate the number of period absences that equate to half and full day absences. This is done on the DASL Options screen. Documentation is provided in DASL Help for this, or contact [daslstaff@omeresanet.net](mailto:daslstaff@omeresanet.net) for help setting this up.



## STUDENT SERVICES UPDATE - UPDATE

### Special Services (SpS)

Expandable Fields are coming in May (70 of the 87 forms in SpS will have expandable fields). Also the Summary of Performance (Sop) and New Progress Report Options will be available.

We will soon be offering trainings on the ETR portion of the software along with John Rocchi from SST R12 to review the content.



### DASL

The DASL version 11.4 is set for a targeted release in May 2011. Some highlights of this release are:

#### ***Assessment Import at District Level***

***OCTCA Assessment Import***

***ACT Assessment Import***

***PLAN Assessment Import***

***(SAT and PSAT imports will be coming in a future release)***

In addition to updating the software for future releases, DASL and Software Answers have been working together on the requirements for the Race to the Top grant. They will provide a response to ODE's Request for Proposal for district-level technical tools.

**FYI** - New and/or updated documents have been posted in the HELP section of DASL.

GPA & Rank Formula Helpful Hints

Graduation Verification Example Document

Marks End User Guide

Course History, Class Rank & Transcripts End User Guide - have been updated to include tables outlining the features of each fixed format along with screenshots of each format.





## EMIS UPDATE



May begins a very busy time for EMIS Coordinators. On May 2<sup>nd</sup> and 3<sup>rd</sup> the state OAEP conference is held in Columbus and attended by over 500 EMIS professional members and non-members. This conference is key to providing EMIS Coordinators with valuable information regarding all areas of EMIS reporting. Most important is that staff from ODE is there to present any new or changing information for the current reporting period and update district coordinators on any changes that may be coming for the next school year. Additional information can be found on the web site [www.oeap.net](http://www.oeap.net).

Training for the Yearend reporting requirements is being held on the 10<sup>th</sup>, 11<sup>th</sup>, and 12<sup>th</sup> of May. All EMIS Coordinators should plan on attending one of these meetings.

May 6<sup>th</sup> is the first weekend districts can submit their FY11N yearend data. EMIS Coordinators will continue to gather, verify, correct and resubmit their data up until the close of the Yearend reporting period which is July 15<sup>th</sup>, 2011. Year-end reporting consists of accurately reporting data for all students, staff, and non certified personnel as well as testing scores, discipline and gifted information, special education data for funding students next fall, building information, open enrollment adjustments, Career –Tech accountability, retained students and much more. All of this data is used to produce the accountability reports that will determine the district's rating on the 2011 Local Report Card that comes out in August. Coordinators are responsible for seeing that the data is reported in a timely fashion and that they are meeting the submission requirements set by ODE. Failure to meet these time lines will result in an out of compliance warning being issued to the district. It is important that all administrators see that information requested by the EMIS Coordinator is provided as soon as possible.



May 27<sup>th</sup> is the beginning of the FY11G Graduate reporting period. Data used to determine a district's graduation rate is reported up through November 18<sup>th</sup>, 2011. EMIS Coordinators will need an accurate list of all students that receive a diploma from their district in order to insure an accurate calculation. Trainings for the graduate reporting period will be held later in June.

As you can see, the next 3 months are very busy ones for EMIS Coordinators. The EMIS staff here at OME-RESA will be available to answer any questions and to provide you with any help needed throughout the reporting periods. We wish you all a happy and healthy Spring and Summer!

**CONGRATULATIONS!**

The following EMIS Coordinators have passed their CEP test and are now Certified EMIS Professionals in our region:

Kim Coburn, Toronto CSD

Amy Wickham, Jefferson County JVS

Karen Martin, Jefferson Co. ESC

Cathy Matthews, Mid-East

Salina Moore, Bridgeport EVSD

Vicki Sichina, Rolling Hills LSD

Jayme Browning, Steubenville CSD



## FISCAL SERVICES UPDATE



### **Fiscal Year End Treasurers' Inservice Scheduled**

The annual fiscal year end treasurers' inservices have been scheduled for Wednesday, June 8<sup>th</sup> at Eastern Gateway Community College in Steubenville, and Thursday, June 9<sup>th</sup>, at the Buckeye JVS in New Philadelphia. Both meetings are set to begin at 9:30 a.m., with refreshments being available at 9:00. The meeting should last until approximately 12:00. Please plan to attend if at all possible.

Meeting topics will cover a complete review of the payroll and budgetary fiscal year end close out procedures, as well as EMIS topics/changes that will affect NEWCNT and financial submissions. A brief review of the capital asset reporting that occurs with your EMIS financial submission will be discussed as well as the new goals ODE will implement for reporting period H. This will be much like the existing goals that your district must meet for staff and student reporting. There will now be goals listed for elements of the June 30<sup>th</sup> financial reporting, with districts getting out of compliance letters if those goals are not met within the timeline set by ODE. More information on this new topic will be provided at the meeting where we can discuss the change and field questions that may apply to all districts, giving everyone a chance to hear the responses and ask additional questions as needed.

By June we should also have more solid information on other reporting requirements that may or may not affect your district, such as Senate Bill 5, W2 reporting requirements for 2012 that will affect the way you track your board share of insurances, etc.

### **Senate Bill 5 and 2012 W2 Reporting Requirements – Insurance Deductions Records That May Be Needed**

During the month of April, districts were requested to provide fiscal staff with information regarding the status of deduction records used to track employee share of health insurance premiums, board share of health insurance premiums, or the absence of both record types. I was pleasantly surprised to find that out of 46 districts, only 3 did not have deduction records in place at all to track insurance premiums. With this information in hand, it will now be a little easier for us to put together instructions for updating these records, should the need arise at your district, to adjust employee share deduction rate, board share deduction rate, or both.

While Senate Bill 5 could take us down to the wire on June 30<sup>th</sup> as to the need to make deductions effective at your district on July 1<sup>st</sup>, it is important to know what you need to be ready to do, should a last minute referendum NOT occur and the need for a 15% deduction of insurance premium need to take place. It is our understanding that districts whose staff members are currently in a contract, that does not expire 6/30/2011, will not have to withhold the insurance premium this July 1<sup>st</sup>. However, articles in major newspapers have quoted government officials as saying that if S.B. 5 does get a referendum, they'll get the changes in through the budget. Whether or not this can or will happen, no one can know. What we do know is we have to be ready for anything and in order to be ready for anything we have to do things in advance so that payrolls can be processed on time and be as accurate as possible.

We will keep on top of this as much as possible and will develop instructions for districts to have 'at hand' for whatever decision is made so they can make the changes that will affect their district.



### **New Contract Program – Reminder of Changes Mentioned in December 2010 Meetings**

This time of year districts are entering new contracts for staff for the upcoming school year. The first group of staff whose contracts will change will take place as of 7/1/2011. Because June staff and student reporting does not end until the latter part of July, AND most if not all districts will have purged new contracts for classified staff whose new contract begins July 1, staff extractions for EMIS done up through the close of the June EMIS reporting period will pull the NEW contract information for the next school year if you do NOT move the old contract amounts to the EMIS fields on screen 2 of the NEWCNT program. Screen shots and examples were provided in the December treasurer's inservice manual if you need to reference them while entering the new contracts.

Failure to place the old salary amounts in the EMIS salary fields will cause the June staff extraction to pull the next year's contract amount and that would make your staff look as though they got a raise between October reporting and June reporting. If you have questions or need assistance to ensure the new contract information is correct in regards to EMIS reporting, please email [fstaff@omeresanet.net](mailto:fstaff@omeresanet.net) for help.



## INFOHIO UPDATE

### Digital Video Collection

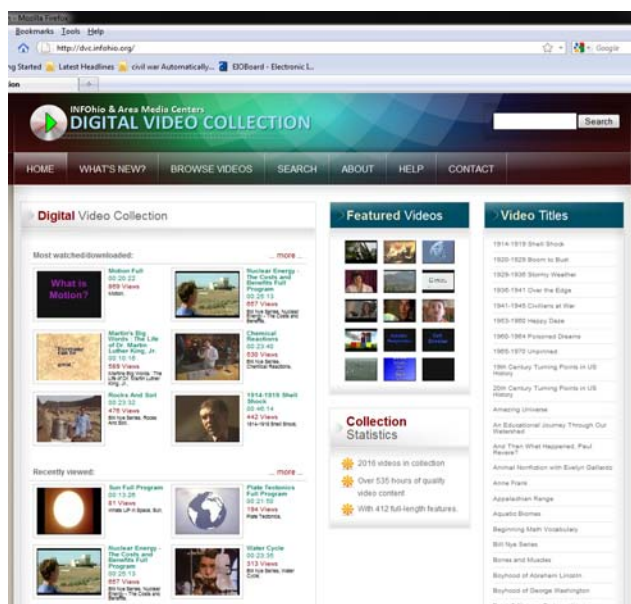
<http://dvc.infohio.org>

The Digital Video Collection has a new interface with new features designed to make the collection more valuable for Ohio's K-12 students, parents and educators.

Various Core Collection pages on the INFOhio website now link to the new interface.

The new interface provides:

- A contemporary and colorful look, including a section that highlights the most recent acquisitions to the DVC
- Easy access to videos in multiple formats – the DVC contains more than 2,000 digital video segments licenses at the state level and FREE to all Ohio's K-12 students, parents and educators.
- Video thumbnails for improved navigation, with the CC logo to indicate the presence of captions.
- Access for mobile devices, automatically detecting when a mobile device is being used.
- Continued access 24/7/365 with the same home access as for INFOhio's Core Collection of Electronic Resources.






## INFOHIO UPDATE - CONTINUED

### Advocating For INFOhio

New publications have been posted on the INFOhio website to provide data that illustrates INFOhio's impact on Ohio's K-12 teaching and learning:

### INFOhio By The Numbers



**Serving School Districts and School Libraries to  
Enhance Teaching and Learning for the 21st Century**

**IMPACT**

**An evaluation by the State Library of Ohio found that the automation of Ohio's school libraries has had major positive impacts on K-12 education in Ohio.** Automating school libraries – including INFOhio's Core Collection of Electronic Resources – and providing proper instruction for students have a positive impact on student achievement. "...Access to information is more equitable; important searching skills are taught through the online catalog ... and students are better prepared to continue their education and/or become lifelong learners."<sup>1</sup>

<p><b>ONE OF FIVE</b> INFOhio is <i>one of five core services</i> provided by ITCs, as mandated in the <i>Ohio Administrative Code</i>. – Per ORC 3301-3-01 Scope and definitions (5) "Core services" (d) Library automation, curricular resources, and educational technology services to support academic content standards and effective instruction.</p> <p><b>100%</b> All Ohio schools — regardless of size, location or fiscal resources — with equitable access to the INFOhio Core Collection of Electronic Resources. The collection currently consists of 13 high-quality databases, which allow students to discover and develop their knowledge base while supporting their findings with accurate, reliable sources. 24/7/365</p> <p><b>\$19.90 vs. FREE</b> Cost per student to purchase the same Core Collection of Electronic Resources locally, if funding cuts restrict statewide purchase of resources through Libraries Connect Ohio. Cooperative licensing agreements provide each school district with reliable resources that increase students' research capabilities.</p> <p><b>FREE</b> The cost for schools to use the Digital Video Collection (DVC). Materials may be streamed or downloaded for use in K-12 classrooms statewide. Area Media Centers have 1,800+ digital video segments licensed at the state level in this collection hosted and supported by INFOhio.</p> <p><b>100%</b> Number of educators who can participate in INFOhio's 21st Century Learning Commons. First introduced in February 2010, this online tool provides an array of resources to help educators discover new ways to inspire students to think critically, solve problems, collaborate, innovate and create.</p>	<p><b>1.2 million</b> Number of students served by INFOhio's library management system representing 84% of Ohio school districts. (514 out of 612)</p> <p><b>18.5 million</b> Items circulated last year through 2,447 INFOhio automated school libraries.</p> <p><b>1.1 million</b> Number of resources from INFOhio automated libraries and educational media centers available through INFOhio's Curriculum Resource Catalog (CRC), which serves as a primary source for copy cataloging. Last school year, 1.4 million searches were conducted using the Curriculum Resource Catalog.</p> <p><b>99.5%</b> The percentage of all technical support problems resolved in-state with only .5% being escalated to the vendor. As a result, vendor maintenance fees have not increased since 1994.</p> <p><b>4.1 million</b> Number of visits last year to INFOhio's main website, <a href="http://www.infohio.org">www.infohio.org</a></p> <p><b>14+</b> INFOhio works in collaboration with a wide range of strategic partners and state agencies to develop and then deliver beneficial content and services to K-12 schools: Ohio Department of Education, Educational Service Centers, the State Library of Ohio, OPLIN, OHIOLINK, OHIONET, Ohio Educational Library Media Association, eTech Ohio, EdTechs, Area Media Centers, Ohio Resource Center, Ohio Historical Society, Board of Regents, OARnet, and many others.</p>
---	--

**This Is INFOhio!**

Celebrating **20+ years** of success! One of the largest library and information networks in the United States. INFOhio is a statewide information system that has partnered since 1990 with Ohio's **Information Technology Centers (ITCs)** to **efficiently and cost-effectively** deliver library services to K-12 schools through the existing **Ohio Education Computer Network (OECN)**.

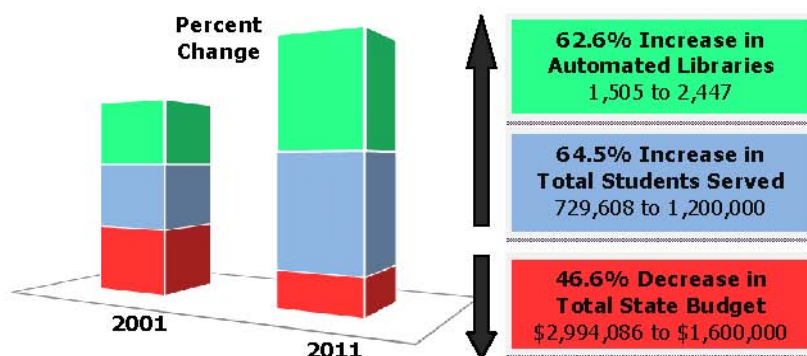
<sup>1</sup> State Library of Ohio, LSTA Five Year Evaluation, March 30, 2007



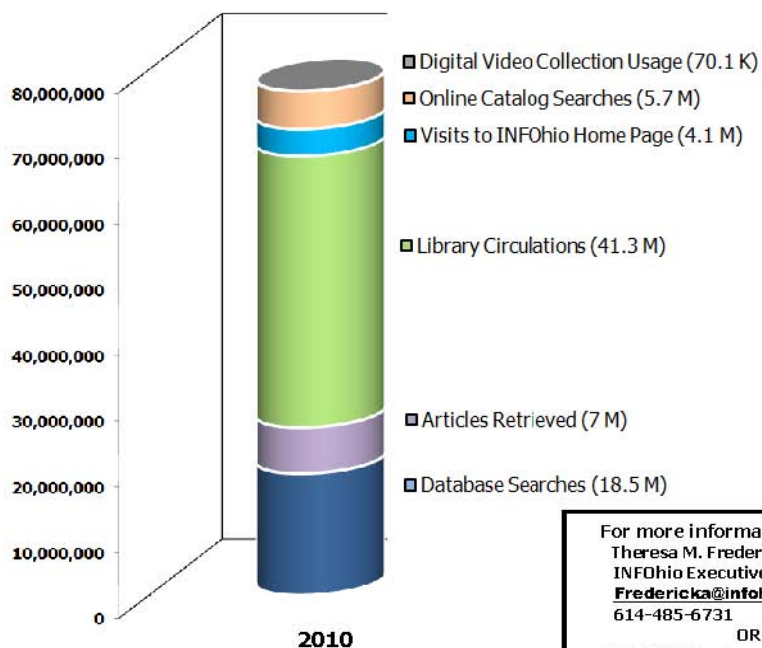
## INFOHIO UPDATE - CONTINUED

### THE IMPACT OF INFOHIO

#### Cost Efficiencies & Return on Investment



#### Demonstrating Annual Usage by Students & Teachers





For more information contact:  
 Theresa M. Fredericka  
 INFOhio Executive Director  
[Fredericka@infohio.org](mailto:Fredericka@infohio.org)  
 614-485-6731  
 OR  
 Visit INFOhio at [www.infohio.org](http://www.infohio.org)



# INFOHIO UPDATE - CONTINUED

## INFOhio Fact Sheet

BE PREPARED	INFOhio FACT SHEET	
	February 10, 2011	KNOW THE FACTS

### FACTS ABOUT INFOhio & School Libraries

- ❖ School libraries and librarians have a positive impact on student achievement.
- ❖ Automated school libraries also have a positive impact on student achievement.
- ❖ Automated libraries have the infrastructure and connectivity to help teachers teach and students learn.
- ❖ Books, non-print materials and digital content are heavily used in schools with automated libraries.
- ❖ INFOhio helps school librarians cost effectively catalog their print and non-print materials.
- ❖ Although the paper card catalog is obsolete, some Ohio schools still use them and their students are lagging behind in critical 21<sup>st</sup> century skills.

### FACTS ABOUT INFOhio & Teaching and Learning

- ❖ INFOhio engages students in an active process of building their own understanding and knowledge.
- ❖ INFOhio is an agent for individualized learning, knowledge construction and academic achievement.
- ❖ INFOhio connects school librarians with their academic librarian counterparts to encourage a seamless student transition from high school library to college library.
- ❖ INFOhio's Certified ICoach program supports educators using 21st century instructional strategies.
- ❖ The INFOhio 21st Century Learning Commons helps teachers effectively use Web 2.0 tools and teaching strategies.

### KEY FACTS ABOUT INFOhio

- ❖ INFOhio is a statewide information system which uses a highly centralized and very cost-effective, system architecture for delivery.
- ❖ INFOhio is a nationally recognized model of shared services and cost efficiencies.
- ❖ INFOhio is one of five core services which must be provided by each ITC, as mandated in the Ohio Administrative Code.
- ❖ INFOhio has grown substantially since automating its first two school libraries in 1994.
- ❖ INFOhio is one of the largest library and information networks in the United States.
- ❖ The licensing cost to automate libraries through INFOhio has not increased since 1994.
- ❖ With 2447 libraries, the average annual maintenance fee paid to SirsiDynix is less than \$275 per library.
- ❖ INFOhio is much more than a library automation supplier.
- ❖ INFOhio provides equitable statewide access to essential K-12 electronic resources.
- ❖ State funding for INFOhio has decreased significantly even as it has substantially expanded services.
- ❖ INFOhio's ability to provide databases in the future is threatened by funding reductions.



## INFOHIO UPDATE - CONTINUED

### FACTS ABOUT INFOhio & School Libraries:

1. School libraries and librarians have a positive impact on student achievement.  
-- A national research study involving over 13,000 Ohio K-12 students showed clear evidence that "an effective school library led by a credentialed school librarian plays a critical role in facilitating student learning and knowledge building."
2. Automating school libraries has a positive impact on student achievement.  
-- An evaluation by the State Library of Ohio found that the automation of Ohio's schools libraries "has had major positive impacts on K-12 education in Ohio -- access to information is more equitable; important searching skills are taught through the online catalog, ... and students are better prepared to continue their education and/or become lifelong learners."
3. Automated libraries have the infrastructure and connectivity to help teachers teach and students learn.  
-- Automating behind-the-scenes library functions frees the librarian to be able to work with students and teachers.
4. Books and other resources are heavily used in schools with automated libraries.  
-- Last year 18.5 million books & non-print materials were circulated in the 2,447 INFOhio-automated libraries, a rate of 15+ per child.  
-- Ohio school libraries have approximately half the books Ohio's university libraries have, but K-12 students circulate almost three times the books per year.
5. INFOhio helps school librarians cost effectively catalog their print and non-print materials.  
-- INFOhio's shared Curriculum Resource Catalog has over one million unique bibliographic records which can be copied at no cost by school librarians
6. Although the paper card catalog is obsolete, some Ohio schools still use them.  
-- While no public or academic library in Ohio has had a card catalog for over fifteen years, there are still 229 Ohio school libraries (including 36 high school and 193 middle/elementary schools) which have only paper card catalogs.  
-- In addition, 841 school libraries, which are still not a part of INFOhio's automation network, are automated with less sophisticated stand-alone systems.

### FACTS ABOUT INFOhio & Teaching & Learning

1. INFOhio engages students in an active process of building their own understanding and knowledge.  
-- The INFOhio Discovery Portal (formerly SchoolRooms) offers a one-stop, single-search capability, unique among Ohio libraries.  
-- It brings together 23,000+ educator-selected, age-appropriate websites and INFOhio's electronic resources, all aligned to curricular subject areas.
2. INFOhio is an agent for individualized learning, knowledge construction and academic achievement.  
-- The INFOhio Research Project Calculator provides an online template for doing research, developing a timeline, asking good questions, taking notes, etc.  
-- The Research Project Calculator is nationally recommended as an online aid for student research.
3. INFOhio's Certified Coach program supports teachers in using 21st century instructional strategies.  
-- The ICoach program is a statewide effort to train educators to effectively utilize 21<sup>st</sup> century learning and to integrate INFOhio resources into the classroom. The ICoach team has been divided among 16 regions throughout Ohio.
4. The INFOhio Learning Commons helps educators effectively use Web 2.0 tools & teaching strategies.  
-- It offers a free self-paced online course, *21 Essential Things for 21st Century Success*.

-- It also offers a graphical approach to incorporating information literacy skills using INFOhio's DIALOGUE Model, and ways to enhance the use of INFOhio's Core Collection.

### KEY FACTS ABOUT INFOhio:

1. INFOhio is a statewide information system utilizing a highly centralized and very cost-effective system architecture for delivery.  
-- INFOhio's library automation system, currently in 2,447 libraries in 514 districts, operates on only 20 shared servers.  
-- OhioLINK currently has 60 hosting sites for 115 libraries.
2. INFOhio is a nationally recognized model of shared services and cost efficiencies.  
-- INFOhio has achieved substantial cost savings by sharing hardware and software and by standardizing practices and procedures to create economies of scale.
3. INFOhio is **one of five core services** which must be provided by each ITC, as **mandated in the Ohio Administrative Code**.  
-- Per ORC 3301-3-01 Scope and definitions (5) "Core services" (d) Library automation, curricular resources, and educational technology services to support academic content standards and effective instruction.
4. INFOhio has grown substantially since automating its first two school libraries in 1994.  
-- It took almost ten years to automate the first 900 libraries; it took five years to automate the next 1,500.
5. INFOhio is one of the largest library and information networks in the United States.  
-- 2,447 individual school libraries automated with INFOhio serve nearly 1.2 million K-12 students and educators.  
-- Based on the number of automated libraries, INFOhio is the largest automation system supported by SirsiDynix, the largest automation vendor in the United States.
6. The licensing cost to automate school libraries through INFOhio has not increased since 1994.  
-- The original cost of \$4.10 per ADM has remained constant.
7. With 2,447 libraries, the average annual maintenance fee paid to SirsiDynix is less than \$275 per library.  
-- Annual maintenance paid to SirsiDynix averages **55¢ per ADM**, based on a 10% annual rate.  
-- Without INFOhio, the annual cost would be **\$4.40 per ADM** and at the industry standard of 18%.
8. INFOhio is much more than a library automation supplier.  
-- INFOhio, initially a library automation project, has evolved into an electronic and digital content provider.  
-- It is also a primary source of instructional services, professional development and training for teachers and other educators.
9. INFOhio provides equitable statewide access to essential K-12 electronic resources to all Ohio students.  
-- Collection is funded by a combination of state and federal funds working collaboratively with Libraries Connect Ohio partners. INFOhio funding reductions caused the elimination of *SIRS Discoverer*, a qualified elementary database for grade appropriate access for K-6.
10. Funding for INFOhio has decreased significantly even as it has substantially expanded its services.  
-- Overall state funding for INFOhio has declined 46% since 2001, even though INFOhio automated an additional 942 (+63%) libraries with no increase in staff and use of the electronic resources increased by 888% (for searches) and 329% (for articles printed).
11. INFOhio's ability to provide databases in the future is threatened by funding reductions.  
-- With only \$150,000 allocation, INFOhio is unable to pay its fair share of the \$4.1 million statewide total cost.  
-- Given the economic situation, if funds are eliminated districts would need to pay \$19.90 per ADM to continue these resources.



## ***INFOHIO UPDATE - CONTINUED***

### **INFOhio**

- The K-12 community is proud of the INFOhio network, one that is research based, data driven, and grassroots built and supported
- INFOhio provides equity to all students, all teachers, all parents, all schools
- INFOhio provides the best value for a state program in a challenging economic time
- INFOhio provides the best tools and resources for preparing students of the 21<sup>st</sup> century
- INFOhio provides the best homework help to parents

### **21<sup>st</sup> Century Learning Commons Updates**



The world of teaching and learning is overflowing with information and methodologies for teaching today's digital learners. **INFOhio's 21<sup>st</sup> Century Learning Commons** is a highly successful community where Ohio educators and others learn about Web 2.0 tools in the context of INFOhio products and services. As of 4/13/2011, there have been over **2,318** users signing up to utilize the fantastic resources that **The 21<sup>st</sup> Century Learning Commons** provides!



## INFOHIO UPDATE - CONTINUED



Here's what's new:

- [Inquiry and Knowledge Building Process chart](#) – extends INFOhio's Model for 21<sup>st</sup> Century Skills (which introduces educators and students to an inquiry-based research model) by blending information literacy skills, national standards, instructional strategies and a variety of electronic resources – all in a convenient, graphical format. The chart highlights the relationships between the stages in the DIALOGUE Model with the inquiry process, especially how students can use the model to build new knowledge.
- Start anywhere on the chart and explore. Within the wealth of knowledge associated with the Model, there are modules, created by INFOhio in partnership with Montgomery County Educational Service Center, that exemplify the instructional strategies associated with the inquiry and knowledge building process. Each module contains an explanation of the instructional strategy, a video of the strategy in action in a classroom and the INFOhio resources and other Web-based content that support the instructional strategy. Check the Learning Skills area for:
  - Module 1: Cues, Questions and Advanced Organizers
  - Module 2: Note Taking and Summarizing

**Congratulations!**

Congratulations to the 2011 New Philadelphia City School District . . . Educator of the Year  
District Librarian, Constance “Connie” Evans.





## ***NETWORK/SYSTEM UPDATE***

### **E-mail Migration and Archiving:**

We have successfully migrated 31 school districts to the new exchange server. We will notify districts this month of their intentions to use OME-RESA's archiving service. The cost is \$4.50 per mailbox. If you're interested in utilizing the archiving service and want to verify the current active e-mail accounts in your district, please notify us at [emailstaff@omeresa.net](mailto:emailstaff@omeresa.net).



### **Citrix Virtual Application Service:**

OME-RESA has completed the Citrix virtual application proof of concept. We are currently publishing virtual applications access to district personnel who may be interested in evaluating virtual application functionality on multiple client platforms. We also have a limited amount of Wyse Thin Clients that can be provided to the district for an evaluation of thin client technology with Citrix access.

If you have any questions concerning this service and how it may apply to your district's current and future technology demands please contact us at [lanstaff@omeresa.net](mailto:lanstaff@omeresa.net) and we will gladly arrange some time to sit down and discuss the benefits of this emerging technology and how it can benefit you.



### **Tech Training for District Technology Personnel:**

We are currently exploring options with outside partners to provide "Tech" training for district technology coordinators and support personnel. We are negotiating consortium pricing to provide the lowest cost possible for these training events.



## ***NETWORK/SYSTEM UPDATE***

### **Configuring Smart Devices for E-mail Access:**

If you have questions concerning the configuration of the Droid/iPhone smart phone please refer to the Helpdesk link: <https://helpdesk.omeresea.net/index.php?pg=kb.book&id=5> for instructions. If you have any questions concerning the setup of these types of smart devices and find the link above unhelpful, please notify us at [emailstaff@omeresea.net](mailto:emailstaff@omeresea.net) and we will assist you to the best of our ability.



### **OME-RESA Offsite Backup Solution:**

Please be aware that OME-RESA provides an offsite backup solution for your district's vital business data. So ask yourself the following questions; "Are my Superintendent's documents backed up?", "Is my Treasurer's data on his/her PC backed up?" and if so, "How quickly can I restore these types of files in the event I experience a severe hardware failure?" If you don't have a "warm and fuzzy" feeling concerning the above mentioned questions or your backups in general, please notify us at [lanstaff@omeresea.net](mailto:lanstaff@omeresea.net) and we will be glad to help you.



### **Internet Access Speed**

OME-RESA increased the speed of the main Internet connection effective Friday, April 1<sup>st</sup>, 2011 by 20Mbit from 260Mbit to 280Mbit to provide continued high-speed access and delivery of Internet content. OME-RESA continues to maintain a secondary connection to Comcast.

## ***NETWORK/SYSTEM UPDATE - CONTINUED***

### **New Filter & TAP**

On Friday, April 8<sup>th</sup> OME-RESA Network Staff installed a new M86 Filter and new network TAP virtual switching device. The existing and new M86 filters were connected to the TAP for load balancing purposes and the TAP connected to our Core Cisco Switch. The new filter configuration corrects several issues and provides enhanced response time, greater throughput, and redundancy.



### **Generator:**

OME-RESA purchased a new 150kW Natural Gas Generator equipped with a 6.8 Liter V-10 engine and 400AMP Automatic Transfer Switch to provide backup power to servers, network equipment, air conditioning units, lighting, staff computers, etc. in the event of a prolonged power outage. The new generator was tested and placed into service on November 19<sup>th</sup>, 2010. The Generator will help OME-RESA ensure continuous service to our schools and administration offices during times of extended power loss at the OME-RESA facility.

### **Virus Activity:**

Please ensure that your district's clients and/or servers are updated daily with the latest operating system and virus/malware software updates.



Visit us at  
[www.omeresa.net](http://www.omeresa.net)



## **OME-RESA**

**2023 Sunset Blvd.  
Steubenville, OH 43952**

**Phone: (740)-283-2050 x116  
Fax: (740)-283-1500  
E-mail: [angie.underwood@omeresa.net](mailto:angie.underwood@omeresa.net)**