

## Installing Unicorn WorkFlows Java Client on a PC

**Note:** On workstations running the WorkFlows Java™ client, SirsiDynix recommends setting the virtual memory association to equal twice the amount of physical memory, at minimum. Please work with your PC administrator to check the virtual memory setting on each workstation running the WorkFlows Java™ Client, and increase the memory if necessary.

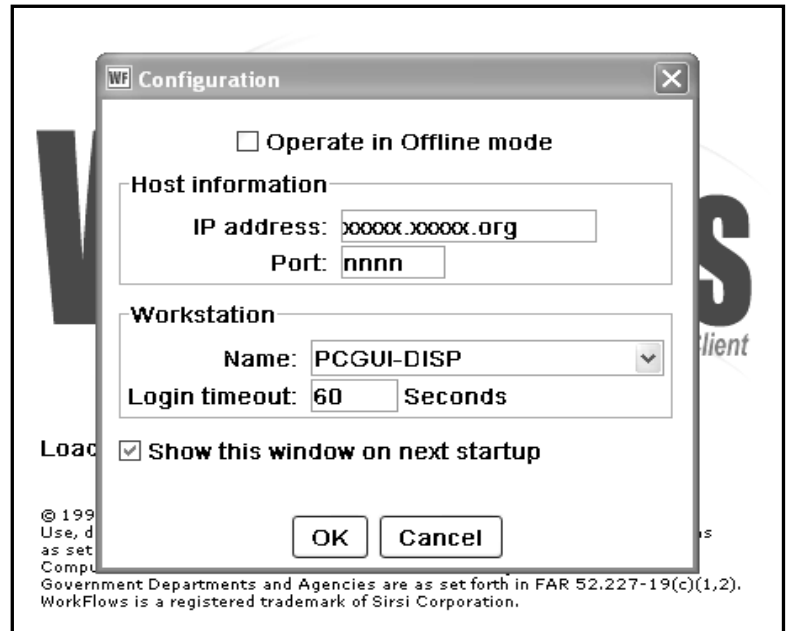
*Minimum workstation requirements:*

- Microsoft Windows 2000/XP with *Service Pack 2* installed. **NOTE: If using Windows Vista, refer to the section of this document entitled “Java Workflows and Vista” for important installation instructions specific to Vista users.**
- 100 MB hard disk space available for application
- Network card
- Processor requirements:
  - Single processor 700 Mhz (1.4 Ghz Pentium IV recommended)
  - Intel Duo Core Technology Processors have been tested and may be used
  - Intel Processors (for use in MACs) has not been tested
- 512 MB memory minimum (**1 GB recommended**). **Windows Vista Workstations require a minimum of 1 GB memory, but 2 GB is strongly recommended.**
- 1024x768 or better screen display (1152 x 864 recommended)

1. **IMPORTANT:** Before beginning the download, please print off this document and follow steps carefully. If you have problems, contact your ITC for further instructions.
2. Log onto the workstation with an administrator account (downloads and updates must be done with the administrator account).
3. The current WorkFlows Java client is available for ITC staff and library staff to download at:  
<http://www.infohio.org/Documents/SirsiManual/SirsiJava/SirsiHandbookJava.html>  
Right Click on **XXX Workflows Java download** zip file (as instructed by your ITC) and do a *Save Target As* (Explorer) or *Save Link As* (Netscape) to save the file in a download folder or desktop of your PC.  
**NOTE: The Library Staff user must be identified as a Power User on the local machine.**
4. Double click on the file to unzip the contents and start the install shield. Click OK/Yes/Next or Finish to all prompts to **accept all the defaults**. SirsiDynix Workflows install XX (specific version as noted by your ITC) appears at the top of the blue screen.
5. Message appears “Install will now launch Workflows Client”. **Click** OK.

6. **Configuration screen displays:**

- **Complete** the Host information, if it is blank. If you do not yet have the IP address and Port information, contact your ITC (or see your district's specifics in Section 1.1 of your Sirsi Manual)
- **Check** "Show this window on next startup".
- **Do not** change any other default settings.
- **Click** on OK at the bottom of the screen.
- **Enter** your User ID and PIN.



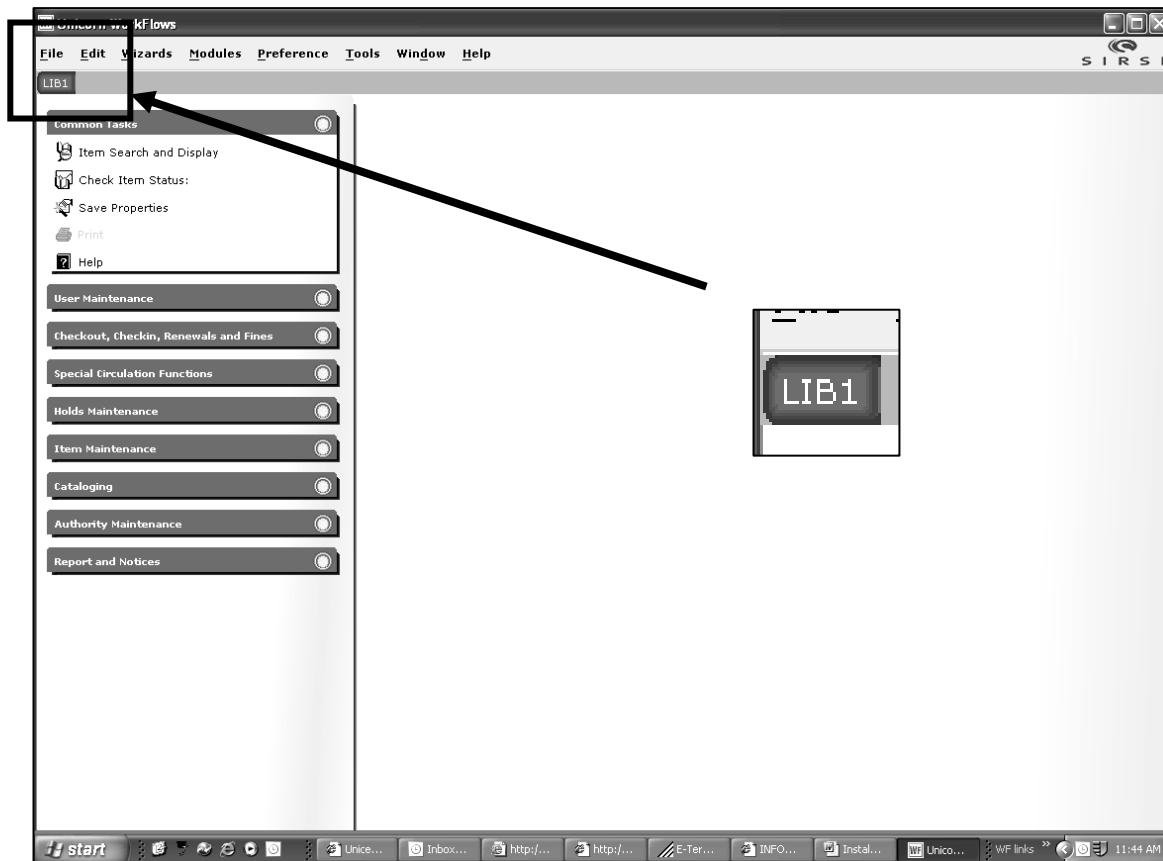
**NOTE:** If you do not yet have this information, contact your ITC (or see your district's specifics in Section 1.1 of your Sirsi manual)

7. **Click** OK. It will ask if you want to update. **Click** Yes. Update will progress/complete.
8. Message "Staff client is exiting – restart to install" **Click** OK. ". (You do **NOT** at any time need to restart the computer, just restart Workflows when prompted to "restart".
9. Message "Setup has finished installing Workflows on your computer". **Click** "Finish"
10. **Click** the WorkFlows icon on your desktop again. It will automatically perform some additional updates. **Select** next,yes... to accept defaults.
11. Message: "Install will now launch Workflows Client..." **Click** "OK".
12. Configuration screen appears, **click** OK; **login** as above.

**NOTE:** Continue to "update" the software, with the ADMINISTRATOR account, until you are NO LONGER prompted to update. If you are prompted to "update" the software AFTER THIS INSTALLATION IS COMPLETE, please say NO – you will be notified when to next update the software. Repeated prompts for updating (AFTER THIS INSTALLATION IS COMPLETE) should be reported to the ITC staff.

13. **Select** Help/About from the top menu bar.
14. Confirm that the date/version number matches that provided by your ITC. **You should also see the INFOhio logo in the top, right-hand section.** (If you did not receive this information from your ITC staff, please contact them.)
15. (**First time only**) from the top taskbar, **select** Preference/Desktop/Desktop setup – **check** "Multiple windows mode".


16. You will need to close Workflows, (then restart Workflows) for this setting to take place. As you close Workflows, you will see a message “The software was successfully installed.” **Click** “close”.
17. **Restart** Workflows. After restarting, you can select any Theme you wish (**except Classic**), and the change will take place immediately (Preference/Desktop/Desktop setup).
18. The toolbar that displays will be the toolbar identified with your user login access.
19. **Click** on that toolbar.



21. This is a good time to **set** the print pathway, following Sirsi Manual Instructions, Sec. 15.1.1.
22. To exit WorkFlows click on the X in the upper right corner of the screen. If you are prompted to save property changes, be sure to select **Yes (or Yes, to my computer Only. )**

**DO NOT save any changes to the server, if prompted to do so!**

## Uninstalling Unicorn WorkFlows Java Client from a PC

1. From the computer's Control panel, **select** the Add/Remove Programs utility.
2. Use the utility to **remove** the  Java WorkFlows program from the computer.
3. Afterwards, **delete** the folder **c:\program files\sirsijwf\** (or ... **sirsi/jwf**) and any remaining contents.
4. **Delete** the folder **c:\Documents and Settings\(\loginuser)\Sirsi**.

## C-Client/Ecole Workflows Client

Effective July 1, 2009, INFOhio will no longer be supporting the C-Client/Ecole Workflows Client. Libraries that need to convert from the WorkFlows C-Client to the WorkFlows Java client must coordinate with their ITC as some database preparation is required before the WorkFlows Java client can be properly used.

# Java Workflows and Vista

## Installing WorkFlows Java on Vista

- Must be logged in as user with administrative rights
- Turn off User Access Control
  - o Go to the Control Panel, Select Users, Uncheck 'User Access Control'
- Install as usual

If you are not logged in as a user with administrative rights, some of the files will be installed with incorrect permissions. If you do the installation correctly, there is still the "User Access Control" issue, which is basically another level of security Microsoft incorporated into Vista. This feature will prevent WorkFlows from performing updates, using SmartPort, etc. Therefore, it must be disabled. This can be done by opening the Control Panel and clicking the Users option.

## Java/JRE Requirements

Microsoft Vista requires JRE 1.6, but WorkFlows Java requires JRE 1.5. If you install the FULL version of the java client on your Vista machine, JRE 1.5 will be installed and WorkFlows configured to use JRE 1.5 automatically. If you do not have JRE 1.5 installed, WorkFlows will not work unless you update the *Program Files/Sirsi/Jwf/wf.bat* file. In that file, you can change the path to JRE to match that of JRE 1.6 on your Vista machine.

### Wf.bat

```
@echo off
set
CLASSPATH=.;platform.jar;workflows.jar;custom.jar;screens.jar;wizards.jar
atcore.jar;commonutil.jar;hatwrapper.jar;uiextensions.jar
set CLASSPATH=%CLASSPATH%;a2j_v2-2.0.8.jar;ki-jzkit-z3950-1_3.jar;log4j-1.2.8.jar;commons-logging-
1.0.3.jar;ldap.jar;xom-1.0d19.jar
set CLASSPATH=%CLASSPATH%;junit-3.8.1.jar;marc4j-b8.jar;spring-1.1.0.jar;jdbm-0.12.jar
if exist upd_jwf.exe goto UPDATE
if /I {%1}=={} (
start "Jwf" /D"C:\Program Files\Sirsi\Jwf" "C:\Program Files\Java\jre1.5.0_06\bin\javaw" -
Dworkflows.directory="C:\Program Files\Sirsi\Jwf" -Xms256m -Xmx256m -jar workflows.jar
) ELSE (
start "Jwf" /D"C:\Program Files\Sirsi\Jwf" "C:\Program Files\Java\jre1.5.0_06\bin\javaw" -
Dworkflows.directory="C:\Program Files\Sirsi\Jwf" -Xms256m -Xmx256m -jar workflows.jar -w%1
)
goto END
:UPDATE
if exist new_jwf.exe del new_jwf.exe
ren upd_jwf.exe new_jwf.exe
start new_jwf.exe
:END
```

If JRE 1.5 is not installed on your Vista system, you must change this path to reflect the location of JRE 1.6 on the Vista machine.

## Java Workflows on Vista System Requirements

- 2GB RAM minimum recommendation. 1GB of RAM for the OS. Another GB of RAM for Workflows. The more RAM the better. Less RAM may work as well, but performance will quickly become an issue.
- 100 MB hard disk space
- Network Card
- If system was purchased with Vista, the processor will be adequate. If machine is upgraded to Vista, processor must be 700Mhz minimum, 1.4 Ghz recommended.
- 1024 x 768 screen resolution